

Interpon: Special Effects Collection



We are delighted to bring you this special collection of decorative finish powder coatings which includes specialty colors, structured finishes and metallic effects.

Ideal for the coating of industrial components, and suitable for interior and exterior usage, we offer 48 highly desirable colors and finishes, all available from stock.

Interior products are recommended for the decoration of components such as metal furniture, lighting fixtures, shop fittings, shelving. Exterior products provide decoration and protection for products exposed to outdoor conditions such as urban and garden furniture, outdoor lighting fixtures, playground equipment, agricultural machinery, etc.

Application guidelines: Powder coatings presented in this color card have been optimised to give the highest consistency of finish during the application process, however, slight variations may appear depending on the actual application conditions used. Each decorative effect is unique in its designated usage and application.

Please consult our Technical Data Sheet before specifying or applying the powder, or speak to our technical support team.

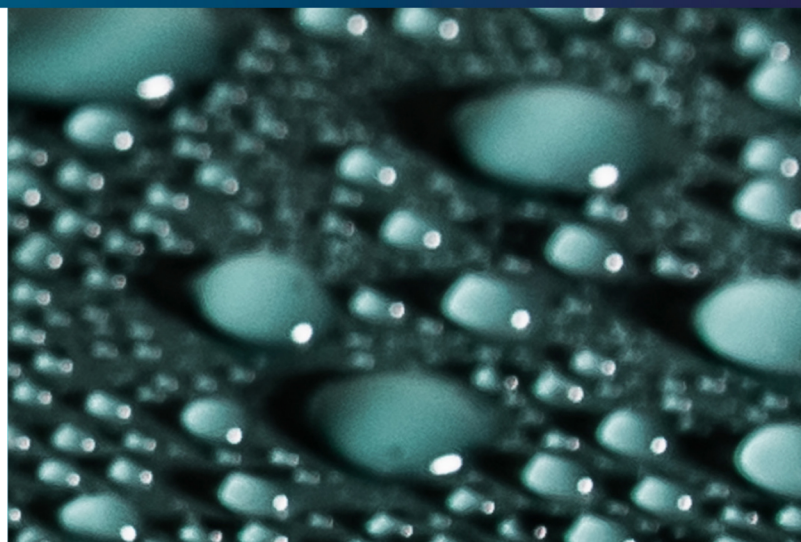
Nous sommes ravis de vous présenter cette collection de finitions décoratives en peintures en poudre incluant des couleurs spécifiques, des finitions structurées et des effets métallisés.

Idéale pour revêtir des éléments industriels à usage intérieur et extérieur, nous proposons 48 finitions très séduisantes, toutes disponibles en stock.

Les produits d'intérieur sont recommandés pour la décoration d'éléments tels que les mobiliers métalliques, les appareils d'éclairage, les agencements de magasins et les rayonnages. Les produits d'extérieur assurent la décoration et la protection des produits soumis aux intempéries, tels que les mobiliers urbains et de jardin, les luminaires d'extérieur, les équipements de terrains de jeu, les machines agricoles, etc.

Directives d'application : Les revêtements en poudre présentés dans ce nuancier ont été optimisés pour donner la plus grande cohérence de finition lors de l'application. Cependant, de légères variations peuvent apparaître en fonction des conditions réelles d'application utilisées. Chaque effet décoratif est unique dans son utilisation et son application.

Veuillez consulter notre fiche technique avant de spécifier ou d'appliquer la poudre, ou adressez-vous à notre équipe d'assistance technique.



Siamo lieti di presentarvi la nuova collezione di vernici in polvere decorative, che include un'ampia gamma di colori particolari, finiture strutturate ed effetti metallici.

Ideale per essere applicata sulle componenti industriali e adatta per l'uso sia in ambienti interni che esterni, questa collezione di effetti speciali offre 48 colori e finiture estremamente di tendenza, tutti disponibili a stock.

I prodotti per interni sono ideali per la decorazione di componenti come mobili in metallo, complementi di illuminazione, arredi per negozi e scaffalature. I prodotti per esterno, invece, sono impiegati per la decorazione e la protezione di parti esposte agli agenti atmosferici, ad esempio tutto ciò che riguarda l'arredo outdoor e di giardini, gli impianti per l'illuminazione esterna, le attrezzature per parchi giochi, le macchine agricole, ecc.

Linee guida per l'applicazione: Le vernici in polvere presentate in questa cartella colori sono state ottimizzate allo scopo di conferire la massima consistenza di finitura durante il processo di applicazione, anche se, a seconda delle reali condizioni di applicazione utilizzate, potreste notare delle leggere variazioni. Ciascuno degli effetti decorativi è unico in quanto ad uso e applicazione.

Vi consigliamo, pertanto di consultare la nostra scheda tecnica prima di selezionare o applicare la polvere o, in alternativa, di rivolgervi al nostro team di supporto tecnico.

Indoor

COLORS ARE REPRESENTATIVE ONLY
PLEASE REQUEST A SAMPLE



MW306I



E3503I



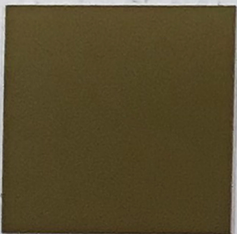
EW401F



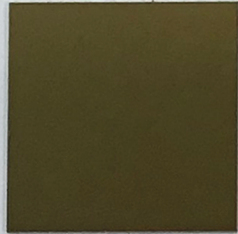
M3503I



M3000I



MW136E



MW100F



EW359JR



EW340I



EW002E



EWA492

COLORS ARE REPRESENTATIVE ONLY
PLEASE REQUEST A SAMPLE



EW102I



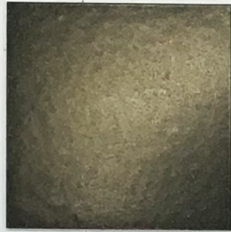
FW651F



MW112F



FW655F



MX700L



EW220I



MW302I



EW425I



MW500I



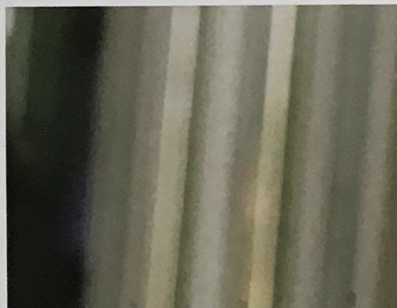
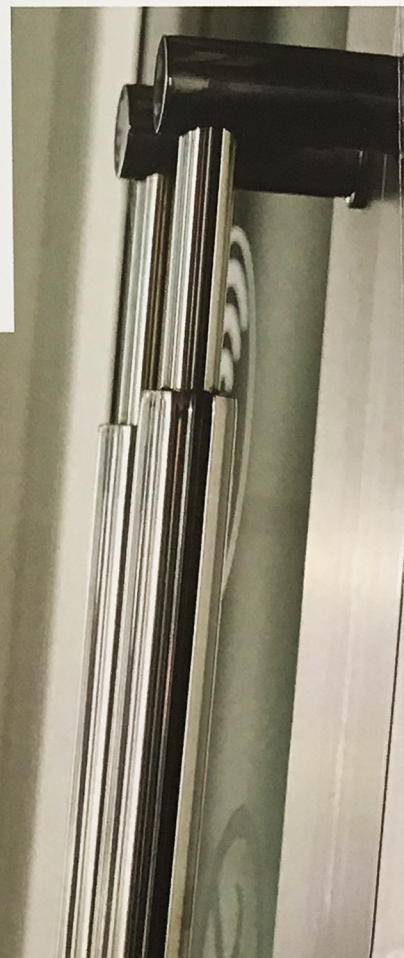
EW243E



MW066I



EW515I



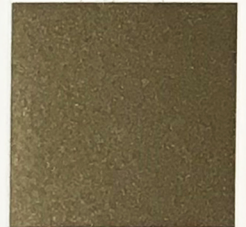
Outdoor



COLORS ARE REPRESENTATIVE ONLY
PLEASE REQUEST A SAMPLE



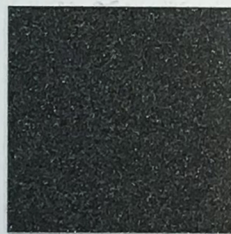
SW308G



SW205G



TX203I



MX700I



SW251F



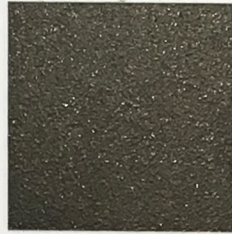
SX360I



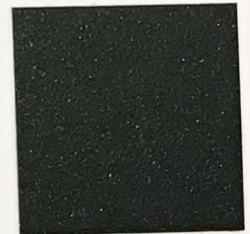
SW310G



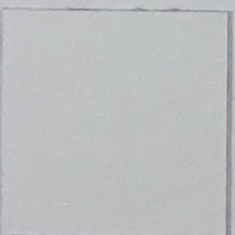
RXA01I



SW302G



SXA02I



SW368F



SW206G



SW254F



SW207G

COLORS ARE REPRESENTATIVE ONLY
PLEASE REQUEST A SAMPLE



SW303G



SW241F



SW305G



SW248F



SW306G



SX350F



MW408I



MW377I



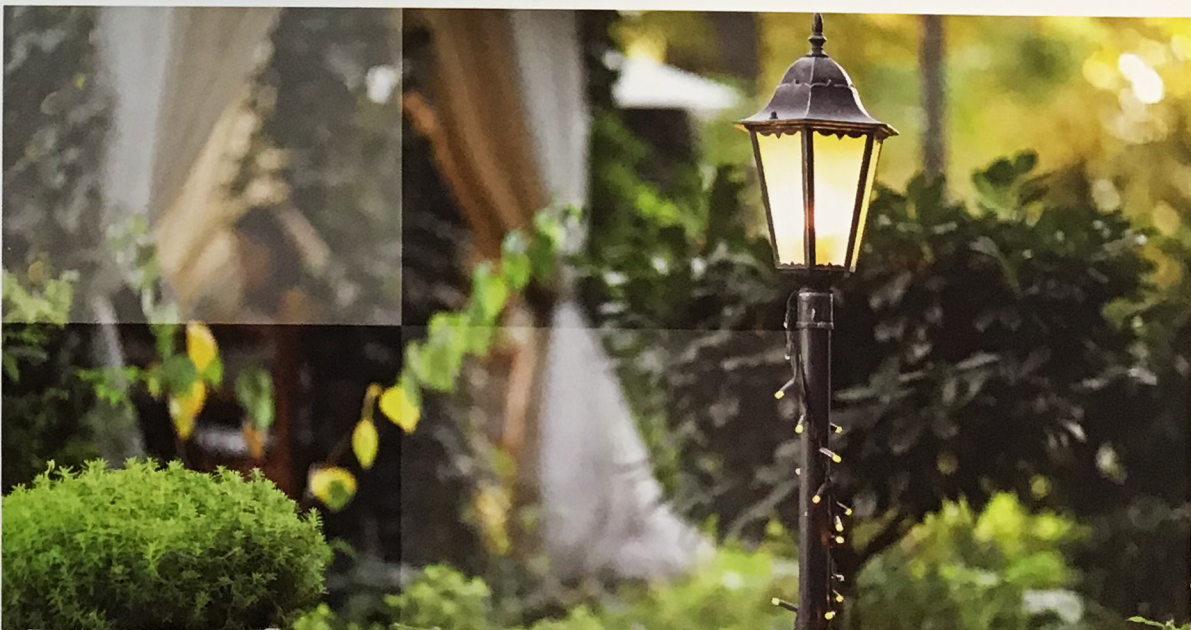
SW242F



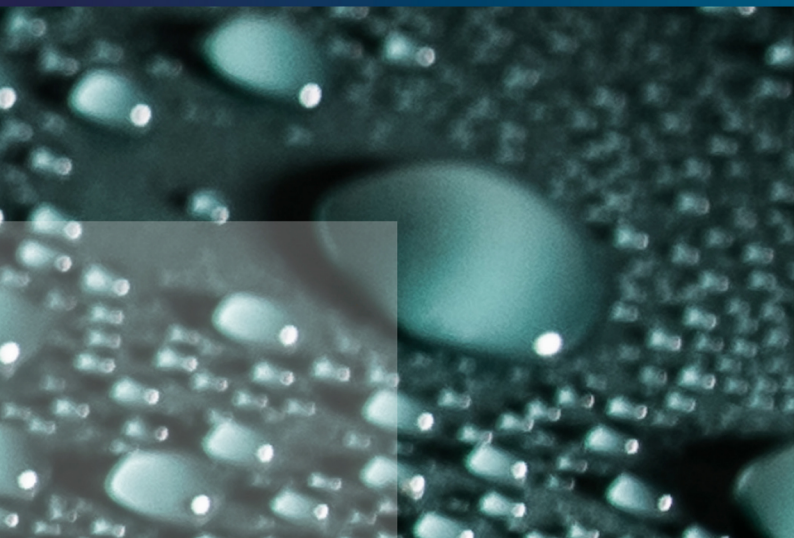
SW208G



NW300M



Colors indicative only.
Actual product may differ slightly.
Please request a sample.



Nos complace presentarle esta colección especial de recubrimientos decorativos en polvo con acabados que incluye colores especiales, acabados estructurados y efectos metálicos.

Ideal para el recubrimiento de componentes industriales, y adecuado para uso interior y exterior, ofrecemos 48 colores y acabados altamente atractivos, todos disponibles en stock y de entrega inmediata.

Los productos de interior se recomiendan para la decoración de componentes como mobiliario metálico, accesorios de iluminación, accesorios de tiendas, estanterías. Los productos para exteriores brindan decoración y protección para elementos expuestos en el exterior, como mobiliarios urbanos y de jardín, accesorios de iluminación para exteriores, equipos para parques infantiles, maquinaria agrícola, etc.

Pautas de aplicación: los recubrimientos en polvo presentados en esta carta de color se han optimizado para dar la mayor consistencia de acabado durante el proceso de aplicación, sin embargo, pueden aparecer ligeras variaciones dependiendo de las condiciones reales de aplicación utilizadas. Cada efecto decorativo es único en su uso y aplicación designados.

Consulte nuestra Ficha Técnica antes de prescribir o aplicar el polvo, o póngase en contacto con nuestro equipo de asistencia técnica.

Wir freuen uns, Ihnen unsere neue Kollektion dekorativer Pulverbeschichtungen vorzustellen – von Metallic- Effekten bis zu Struktur- und weiteren Effekten in vielen attraktiven Farben.

Pulverlacke unserer Special-Effects-Serie sind ideal geeignet für industrielle Bauteile sowie für Innen- und Außenbereiche. Wir bieten Ihnen 48 ausgewählte Farben und Effekte an, die ab Lager lieferbar sind.

Pulverlacke für den Innenbereich werden für die Beschichtung von beispielsweise Metallmöbel, Leuchten, Ladenausstattungen und Regalen empfohlen. Pulverlacke für den Außenbereich bieten Dekoration und Schutz für Produkte, die Außenbedingungen ausgesetzt sind, wie Straßen- und Gartenmöbel, Außenleuchten, Spielgeräte, landwirtschaftliche Maschinen usw.

Verarbeitung und Filmbildung: Alle Pulverlacke in dieser Farbkarte wurden optimiert, um eine höchstmögliche Prozesssicherheit bei der Applikation zu erzielen. Leichte Abweichungen können sich je nach Applikationsart und – Bedingungen ergeben. Die Pulver der Special-Effects-Serie basieren auf unterschiedlichen Chemien und Rezepturen.

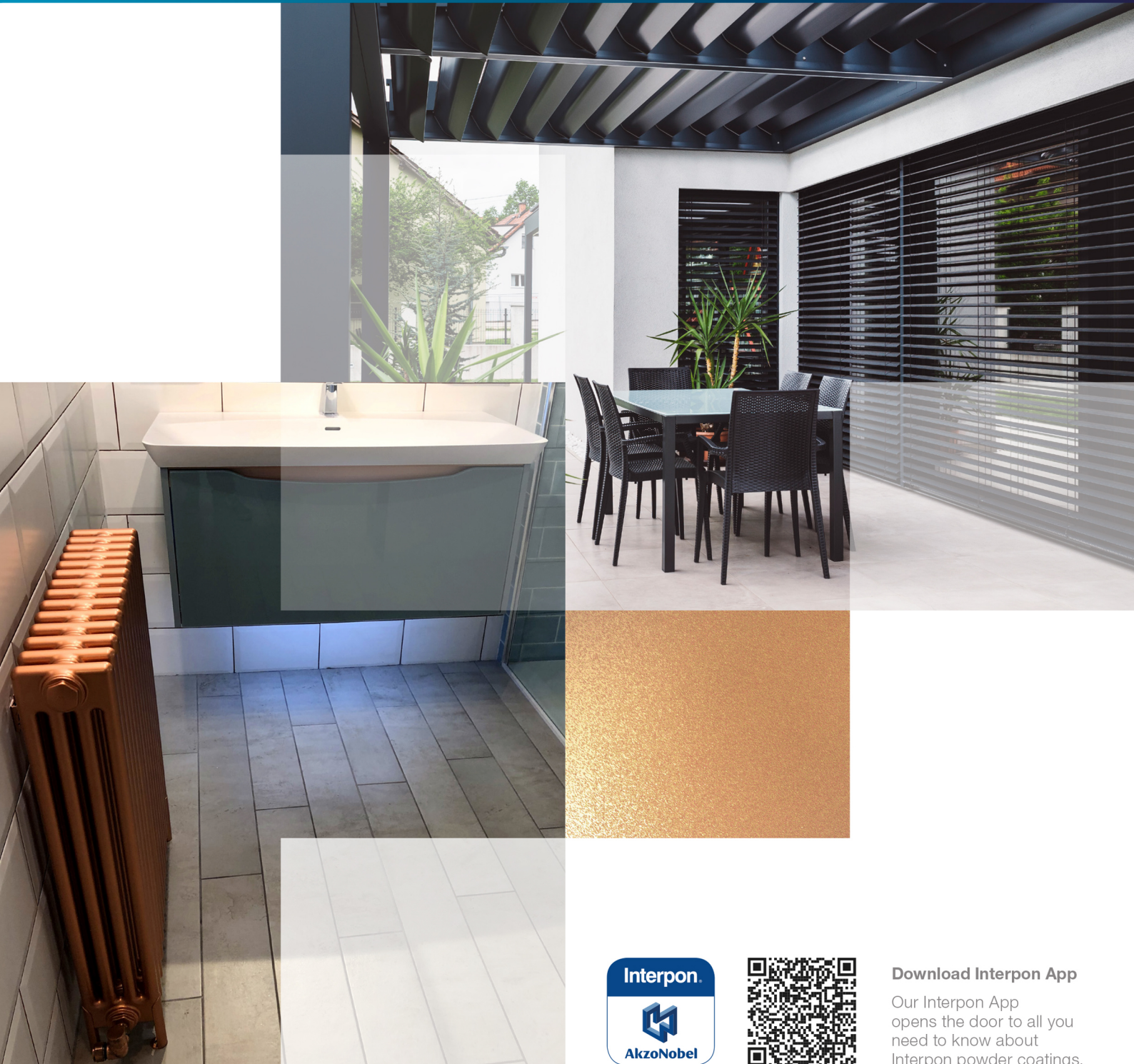
Bitte beachten Sie vor dem Verarbeiten eines ausgewählten Pulverlackes das entsprechende Datenblatt. Unser Technisches Fachpersonal steht Ihnen gerne zur Verfügung.



Follow us on Social Media:
Powder Coatings by AkzoNobel



For more information visit www.interpon.com
or speak to your local representative.



Download Interpon App
Our Interpon App
opens the door to all you
need to know about
Interpon powder coatings.

Interpon®

MKT702

All products supplied & technical advice given are subject to the standard terms of sale of the AkzoNobel supplying company. Copyright ©2019 AkzoNobel Powder Coatings Ltd. Interpon is a registered trademark of AkzoNobel. (Issue 1 - 8/2019). Printed in Italy.